

### Overview

[Shape the Future of QuickSpecs - Your Input Matters](#)

# HPE Networking Instant On Switch 1430

## QuickSpecs

Technology brings new revenue opportunities, more effective communication, and improved productivity to businesses of all sizes.

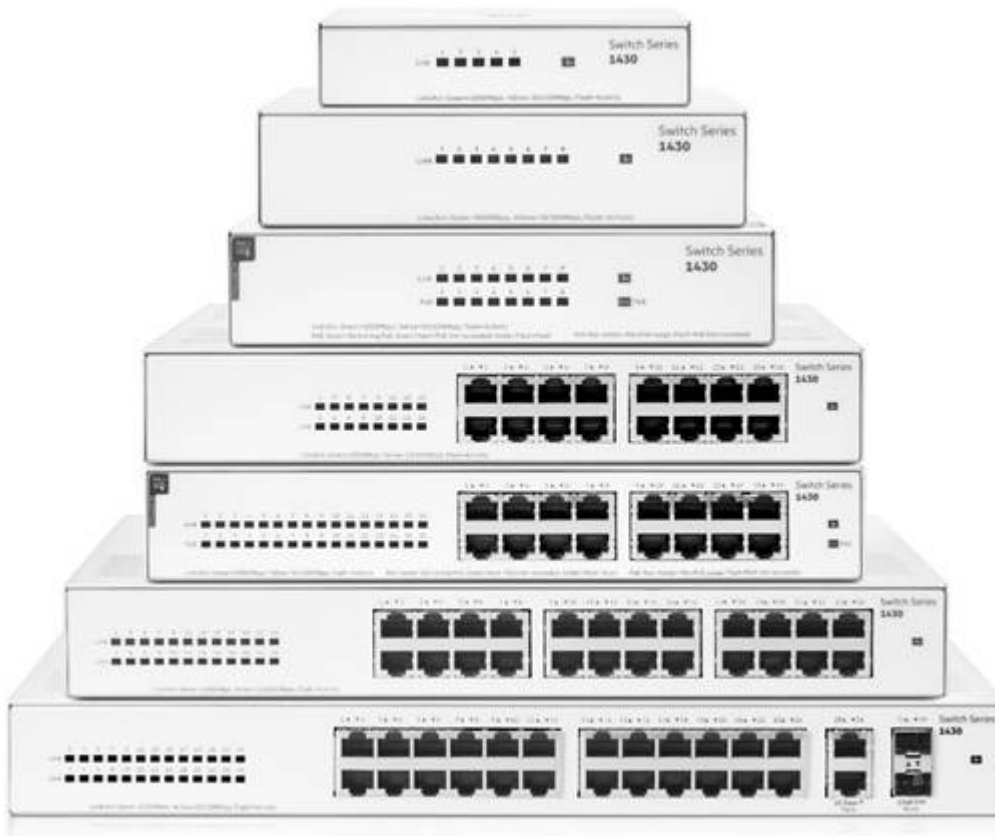
Yet it also poses daily challenges of configuration and maintenance, especially for small businesses who lack IT support. Small offices and home offices need reliable network connectivity that's fast, configuration-free, and affordable for even the most budget-strapped businesses.

The HPE Networking Instant On Switch 1430 is a plug-and-play unmanaged switch series for small businesses looking for simple, reliable, and low-cost network connectivity. These easy-to-use switches deliver Layer 2 Gigabit Ethernet switching capabilities - at an affordable price point - to help connect and share common resources like printers and access points, without any complicated network configuration.

With plug-and-play operation, fully automated functions, zero ongoing maintenance, and Power over Ethernet (PoE) models, these switches deliver simple, reliable connectivity for the smallest SMBs and home offices.

The HPE Networking Instant On Switch 1430 includes seven switches in PoE and non-PoE configurations: one (1) 5-port, two (2) 8-port, two (2) 16-port, one (1) 24-port, and one (1) 26-port model with 2 SFP uplinks models. With the PoE models, you get up to 30W PoE per port power delivery for Class 4 PoE devices like access points, surveillance cameras and VoIP phones. The 8-port and 16-port PoE models come with the power budget of 64W and 124W respectively to support the latest IoT devices. All switches are fan-less, making them ideal for acoustically sensitive areas, and unmanaged requiring no configuration (not managed by HPE Networking Instant On management).

### Overview



HPE Networking Instant On Switch 1430 Family

### Key Features

- Unmanaged Layer 2 Gigabit Ethernet switch series ready to deploy in 5-, 8-, 16-, 24-, and 26-port models
- Up to 124W of PoE to power APs, IP Phones, and other IoT devices
- No configuration or management needed
- Plug-and-play with fully automated functions and zero ongoing maintenance
- Quality of Service (QoS) and flow control for improved network efficiency
- Fan-less with Energy Efficient Ethernet for low power consumption
- Class B certified for home office networks (5 and 8 port models)

### Standard Features

#### Simplicity at its Best

- Plug-and-play switches that work right out of the box
  - Zero configuration required
- 

#### Reliable Connectivity

- Connect faster with Gigabit Ethernet speed
  - PoE to power devices like APs and IP phones
- 

#### We've Got You Covered

- Industry-leading limited lifetime warranty and support
  - 24 x 7 chat support for entire warranty period
- 

#### The Networking Instant On Differentiators

##### Better Together

HPE Networking Instant On products work together to provide a seamless Wi-Fi experience. Wired and wireless voice traffic is prioritized with high QoS priority end-to-end for optimal voice performance.

##### Industry-Leading Support and Warranty

Expert-level support and industry-leading limited lifetime warranty are also included, along with chat support for the life of the product.

---

#### Plug-and-Play

##### Gigabit Ethernet speeds

Supports half/full-duplex auto-negotiating capability on access ports that doubles the throughput of every port.

##### Long Distance Fiber Connectivity

26-port model includes two 1G SFP fiber ports for uplinks and to support long distance connectivity using fiber transceivers, for a total of 28 Ethernet ports.

##### Simplified Cabling

Automatically adjusts for straight-through or crossover cables on all 10/100/1000 ports using Auto MDI/MDI-X.

##### Ethernet Alliance PSE Class 4 Poe Certification

Power Over Ethernet (PoE) functionality is supported on two 1430 models that provide up to 30 W per port, which allows support of Class 4 PoE or IEEE 802.3at-capable devices such as video IP phones, wireless access points, as well as any 15.4 W IEEE 802.3af compliant end device, thereby eliminating the need for additional electrical cabling and circuits.

##### EAPoL frames forwarding

802.1x EAP over LAN frames are forwarded through the switch so that clients can authenticate when the device gives connectivity between an authenticator and supplicants.

##### STP BPDU frames forwarding

The switch forwards the BPDU frames to make sure that Spanning Tree Protocol works correctly preventing loops in the topology.

---

#### Traffic Optimization

##### Prioritize Voice and Video

Quality of Service provides priority of time-sensitive packets (like VoIP and video) over other traffic based on DSCP or IEEE 802.1p classification.

##### Flow Control

Provides a flow-throttling mechanism propagated through the network to prevent packet loss at a congested node.

##### Jumbo Frame Support

---

### Standard Features

Provides up to 9216 bytes frame size to improve the performance of large data transfers.

---

### Warranty, Service and Support

HPE Networking Instant On Limited Lifetime Support provides 24X7 phone support for the first 90 days and chat support for the entire warranty period. Community support is included for the life of the product.

Refer to the Hewlett Packard Enterprise website at <http://www.hpe.com/networking/services> for details on the service-level descriptions and product numbers. For details about services and response times in your area, please contact your local Hewlett Packard Enterprise sales office.

---

### Configuration Information

#### BTO Models

Rule #	Description	SKU
3, 4	HPE Networking Instant On Switch 5p Gigabit 1430	R8R44A
	HPE Networking Instant On Switch 5p Gigabit 1430 No Loc	R8R44A#AC3
3, 4	HPE Networking Instant On Switch 8p Gigabit 1430	R8R45A
	HPE Networking Instant On Switch 8p Gigabit 1430 No Loc	R8R45A#AC3
3	HPE Networking Instant On Switch 8p Gigabit CL4 PoE 64W 1430	R8R46A
	HPE Networking Instant On Switch 8p Gigabit CL4 PoE 64W 1430 PDU	R8R46A#B2B
	HPE Networking Instant On Switch 8p Gigabit CL4 PoE 64W 1430 PDU	R8R46A#B2C
	HPE Networking Instant On Switch 8p Gigabit CL4 PoE 64W 1430 220v	R8R46A#B2E
	HPE Networking Instant On Switch 8p Gigabit CL4 PoE 64W 1430 No Loc	R8R46A#AC3
3	HPE Networking Instant On Switch 16p Gigabit 1430	R8R47A
	HPE Networking Instant On Switch 16p Gigabit 1430 PDU	R8R47A#B2B
	HPE Networking Instant On Switch 16p Gigabit 1430 PDU	R8R47A#B2C
	HPE Networking Instant On Switch 16p Gigabit 1430 220v	R8R47A#B2E
	HPE Networking Instant On Switch 16p Gigabit 1430 No Loc	R8R47A#AC3
3	HPE Networking Instant On Switch 16p Gigabit CL4 PoE 124W 1430	R8R48A
	HPE Networking Instant On Switch 16p Gigabit CL4 PoE 124W 1430 PDU	R8R48A#B2B
	HPE Networking Instant On Switch 16p Gigabit CL4 PoE 124W 1430 PDU	R8R48A#B2C
	HPE Networking Instant On Switch 16p Gigabit CL4 PoE 124W 1430 220v	R8R48A#B2E
	HPE Networking Instant On Switch 16p Gigabit CL4 PoE 124W 1430 No Loc	R8R48A#AC3
3	HPE Networking Instant On Switch 24p Gigabit 1430	R8R49A
	HPE Networking Instant On Switch 24p Gigabit 1430 PDU	R8R49A#B2B
	HPE Networking Instant On Switch 24p Gigabit 1430 PDU	R8R49A#B2C
	HPE Networking Instant On Switch 24p Gigabit 1430 220v	R8R49A#B2E
	HPE Networking Instant On Switch 24p Gigabit 1430 No Loc	R8R49A#AC3
1, 3	HPE Networking Instant On Switch 26p Gigabit 2p SFP 1430	R8R50A
	HPE Networking Instant On Switch 26p Gigabit 2p SFP 1430 PDU	R8R50A#B2B
	HPE Networking Instant On Switch 26p Gigabit 2p SFP 1430 PDU	R8R50A#B2C
	HPE Networking Instant On Switch 26p Gigabit 2p SFP 1430 220v	R8R50A#B2E
	HPE Networking Instant On Switch 26p Gigabit 2p SFP 1430 No Loc	R8R50A#AC3

#### Configuration Rules

Rule #	Description	SKU
1	<b>The following Transceivers install into this switch:</b>	
	HPE Networking Instant On 1G LX SFP LC 10km SMF Transceiver	S0G20A
	HPE Networking Instant On 1G SFP LC SX 500m OM2 MMF Transceiver	R9D16A
3	<b>OCA Only: Required Custom Choice (Min1/Max1)</b>	
	<ul style="list-style-type: none"> <li>Switch/Router/Power Supply to PDU Power Cord - B2B in North America, Mexico, Taiwan, and Japan or B2C ROW.</li> <li>Switch/Router/Power Supply to Wall Power Cord - Localized Option (OCA Default for BTO)</li> <li>High Volt Switch/Router/Power Supply to Wall Power Cord - B2E Option. (Offered only in North America, Mexico, Taiwan, and Japan)</li> <li>No Power Cord - AC3 Option</li> </ul>	

4 For #AC3 option; does not include a Power Adapter

**Notes:** OCA Only Model Selection Form - HPE Aruba Networking > HPE NW Instant On > IOn Switches: 1430 IOn Switch Series

#### Transceivers

Rule #	Description	SKU
	SFP Transceivers	
	HPE Networking Instant On 1G LX SFP LC 10km SMF Transceiver	S0G20A
	HPE Networking Instant On 1G SFP LC SX 500m OM2 MMF Transceiver	R9D16A

### Technical Specifications

HPE Networking Instant On 1430 5G Switch (R8R44A)	
I/O ports and slots	5 RJ-45 autosensing 10/100/1000 ports (IEEE 802.3 Type 10BASE-T, IEEE 802.3u Type 100BASE-TX, IEEE 802.3ab Type 1000BASE-T); Duplex: 10BASE-T/100BASE-TX: half or full; 1000BASE-T: full only
Physical Characteristics	
Dimensions	93(d) x 116(w) x 26(h) mm
Weight	0.60 lb (0.27 kg)
Processor and Memory	2Kb EEPROM; Packet buffer size: 1.0 Mb
Performance	
100 Mb latency	< 3.81 μSec
1000 Mb latency	< 0.93 μSec
Throughput (Mpps)	7.44 Mpps
Capacity	10 Gbps
MAC address table size	8192 entries
Reliability MTBF (years)	525.8
Environment	
Operating temperature	32°F to 104°F (0°C to 40°C)
Operating relative humidity	15% to 95% @ 104°F (40°C) non-condensing
Nonoperating/ storage temperature	-40°F to 158°F (-40°C to 70°C) up to 15000 ft
Nonoperating/ storage relative humidity	15% to 95% @ 149°F (65°C) non-condensing
Altitude	up to 10,000 ft (3 km)
Acoustics	Fanless
Electrical Characteristics	
Frequency	50Hz/60Hz
AC voltage	100-240VAC
Current	0.3A (12VDC - 1A)
Maximum power rating	12W
Idle power	1W
PoE power	-
Power Supply	External Power Adapter
Safety	<ul style="list-style-type: none"> <li>– EN/IEC 60950- 1:2006 + A11:2009 + A1:2010 + A12:2011 + A2:2013</li> <li>– EN/IEC 62368-1, 2nd. &amp; 3rd. Ed.</li> <li>– UL 62368-1, 3rd. Ed.</li> <li>– CAN/CSA C22.2 No. 62368-1, 3rd. Ed.</li> <li>– EN/IEC 60825- 1:2018</li> </ul>
Emissions	<ul style="list-style-type: none"> <li>– EN 55032:2015/ CISPR 32, Class B</li> <li>– FCC CFR 47 Part 15: 2018, Class B</li> <li>– CES-003, Class B</li> <li>– VCCI-32, Class B</li> <li>– CNS 13438, Class B</li> <li>– KS C 9832, Class B</li> <li>– AS/NZS CISPR 32, Class B</li> </ul>

### Technical Specifications

Immunity	BS/EN 55035, CISPR 35, KS C 9835
Generic	EN 55035, CISPR 35
EN	EN/IEC 61000-4-2
ESD	EN/IEC 61000-4-3
Radiated	EN/IEC 61000-4-4
EFT/Burst	EN/IEC 61000-4-5
Surge	EN/IEC 61000-4-6
Conducted	EN/IEC 61000-4-8
Power frequency magnetic field	EN/IEC 61000-4-11
Voltage dips and interruptions	EN/IEC 61000-3-2
Harmonics	EN /IEC 61000-3-3
Device Management	Unmanaged
<b>Mounting</b>	
Mounting positions and supported racking	<ul style="list-style-type: none"> <li>– Supports table-top mounting</li> <li>– Supports wall-mounting with ports facing either up or down using base surface mounting holes</li> <li>– Supports under-table mounting using base surface mounting holes</li> </ul>
Transceivers	

### HPE Networking Instant On 1430 8G Switch (R8R45A)

I/O ports and slots	8 RJ-45 autosensing 10/100/1000 ports (IEEE 802.3 Type 10BASE-T, IEEE 802.3u Type 100BASE-TX, IEEE 802.3ab Type 1000BASE-T); Duplex: 10BASE-T/100BASE-TX: half or full; 1000BASE-T: full only
<b>Physical Characteristics</b>	
Dimensions	138(d) x 157(w) x 37(h) mm
Weight	1.30 lb (0.59 kg)
Processor and Memory	128Kb EEPROM; Packet buffer size: 2.0 Mb
<b>Performance</b>	
100 Mb latency	< 2.7 µSec
1000 Mb latency	< 1.80 µSec
Throughput (Mpps)	11.90 Mpps
Capacity	16 Gbps
MAC address table size	8192 entries
Reliability MTBF (years)	416.2
<b>Environment</b>	
Operating temperature	32°F to 104°F (0°C to 40°C)
Operating relative humidity	15% to 95% @ 104°F (40°C) non-condensing
Nonoperating/ storage temperature	-40°F to 158°F (-40°C to 70°C) up to 15000 ft
Nonoperating/ storage relative humidity	15% to 95% @ 149°F (65°C) non-condensing
Altitude	up to 10,000 ft (3 km)
Acoustics	Fanless

### Technical Specifications

Electrical Characteristics	
Frequency	50Hz/60Hz
AC voltage	100-240VAC
Current	0.3A (12VDC - 1A)
Maximum power rating	12W
Idle power	1.7W
PoE power	-
Power Supply	External Power Adapter
Safety	<ul style="list-style-type: none"> <li>– EN/IEC 60950- 1:2006 + A11:2009 + A1:2010 + A12:2011 + A2:2013</li> <li>– EN/IEC 62368-1, 2nd. &amp; 3rd. Ed.</li> <li>– UL 62368-1, 3rd. Ed.</li> <li>– CAN/CSA C22.2 No. 62368-1, 3rd. Ed.</li> <li>– EN/IEC 60825- 1:2018</li> </ul>
Emissions	<ul style="list-style-type: none"> <li>– EN 55032:2015/ CISPR 32, Class B</li> <li>– FCC CFR 47 Part 15: 2018, Class B</li> <li>– ICES-003, Class B</li> <li>– VCCI-32, Class B</li> <li>– CNS 13438, Class B</li> <li>– KS C 9832, Class B</li> <li>– AS/NZS CISPR 32, Class B</li> </ul>
Immunity	BS/EN 55035, CISPR 35, KS C 9835
Generic	EN 55035, CISPR 35
EN	EN/IEC 61000-4-2
ESD	EN/IEC 61000-4-3
Radiated	EN/IEC 61000-4-4
EFT/Burst	EN/IEC 61000-4-5
Surge	EN/IEC 61000-4-6
Conducted	EN/IEC 61000-4-8
Power frequency magnetic field	EN/IEC 61000-4-11
Voltage dips and interruptions	EN/IEC 61000-3-2
Harmonics	EN /IEC 61000-3-3
Device Management	Unmanaged
Mounting	
Mounting positions and supported racking	<ul style="list-style-type: none"> <li>– Supports table-top mounting</li> <li>– Supports wall-mounting with ports facing either up or down using base surface mounting holes</li> <li>– Supports under-table mounting using base surface mounting holes</li> </ul>
Transceivers	

### HPE Networking Instant On 1430 8G Class4 PoE 64W Switch (R8R46A)

I/O ports and slots	8 RJ-45 autosensing 10/100/1000 Class 4 PoE ports (IEEE 802.3 Type 10BASE-T, IEEE 802.3u Type 100BASE-TX, IEEE 802.3ab Type 1000BASE-T); Duplex: 10BASE-T/100BASE-TX: half or full; 1000BASE-T: full only
Physical Characteristics	
Dimensions	150(d) x 177(w) x 37(h) mm

### Technical Specifications

Weight	1.70 lb (0.77 kg)
Processor and Memory	128Kb EEPROM; Packet buffer size: 2.0 Mb
Performance	
100 Mb latency	< 2.7 $\mu$ Sec
1000 Mb latency	< 1.80 $\mu$ Sec
Throughput (Mpps)	11.90 Mpps
Capacity	16 Gbps
MAC address table size	8192 entries
Reliability MTBF (years)	131.1
Environment	
Operating temperature	32°F to 104°F (0°C to 40°C)
Operating relative humidity	15% to 95% @ 104°F (40°C) non-condensing
Nonoperating/ storage temperature	-40°F to 158°F (-40°C to 70°C) up to 15000 ft
Nonoperating/ storage relative humidity	15% to 95% @ 149°F (65°C) non-condensing
Altitude	up to 10,000 ft (3 km)
Acoustics	Fanless
Electrical Characteristics	
Frequency	50Hz/60Hz
AC voltage	100-240VAC
Current	2A (54VDC - 1.58A)
Maximum power rating	90W
Idle power	4.1W
PoE power	64W Class 4 PoE
Power Supply	External Power Adapter
Safety	<ul style="list-style-type: none"> <li>– EN/IEC 60950- 1:2006 + A11:2009 + A1:2010 + A12:2011 + A2:2013</li> <li>– EN/IEC 62368-1, 2nd. &amp; 3rd. Ed.</li> <li>– UL 62368-1, 3rd. Ed.</li> <li>– CAN/CSA C22.2 No. 62368-1, 3rd. Ed.</li> <li>– EN/IEC 60825- 1:2018</li> </ul>
Emissions	<ul style="list-style-type: none"> <li>– EN 55032:2015/ CISPR 32, Class B</li> <li>– FCC CFR 47 Part 15: 2018, Class B</li> <li>– ICES-003, Class B</li> <li>– VCCI-32, Class B</li> <li>– CNS 13438, Class B</li> <li>– KS C 9832, Class B</li> <li>– AS/NZS CISPR 32, Class B</li> </ul>
Immunity	BS/EN 55035, CISPR 35, KS C 9835
Generic	EN 55035, CISPR 35
EN	EN/IEC 61000-4-2
ESD	EN/IEC 61000-4-3
Radiated	EN/IEC 61000-4-4
EFT/Burst	EN/IEC 61000-4-5
Surge	EN/IEC 61000-4-6
Conducted	EN/IEC 61000-4-8
Power frequency magnetic field	EN/IEC 61000-4-11
Voltage dips and interruptions	EN/IEC 61000-3-2
Harmonics	EN /IEC 61000-3-3

### Technical Specifications

Device Management	Unmanaged
Mounting	
Mounting positions and supported racking	<ul style="list-style-type: none"> <li>– Mounts in an EIA standard 19 in telco rack or equipment cabinet. 2-post rack kit included</li> <li>– Supports table-top mounting</li> <li>– Supports rack-mounting using the brackets provided</li> <li>– Supports wall-mounting with ports facing either up or down using either the base surface mounting holes, or the brackets provided</li> <li>– Supports under-table mounting using the brackets provided</li> <li>– Must be mounted top surface up. To prevent possible impact to long-term reliability, product should not be mounted upside-down</li> </ul>
Transceivers	

### HPE Networking Instant On 1430 16G Switch (R8R47A)

I/O ports and slots	16 RJ-45 autosensing 10/100/1000 ports (IEEE 802.3 Type 10BASE-T, IEEE 802.3u Type 100BASE-TX, IEEE 802.3ab Type 1000BASE-T); Duplex: 10BASE-T/100BASE-TX: half or full; 1000BASE-T: full only
Physical Characteristics	
Dimensions	258(d) x 275(w) x 44(h) mm
Weight	3.80 lb (01.72 kg)
Processor and Memory	128Kb EEPROM; Packet buffer size: 2.0 Mb
Performance	
100 Mb latency	< 2.7 µSec
1000 Mb latency	< 1.80 µSec
Throughput (Mpps)	23.80 Mpps
Capacity	32 Gbps
MAC address table size	8192 entries
Reliability MTBF (years)	269.8
Environment	
Operating temperature	32°F to 104°F (0°C to 40°C)
Operating relative humidity	15% to 95% @ 104°F (40°C) non-condensing
Nonoperating/ storage temperature	-40°F to 158°F (-40°C to 70°C) up to 15000 ft
Nonoperating/ storage relative humidity	15% to 95% @ 149°F (65°C) non-condensing
Altitude	up to 10,000 ft (3 km)
Acoustics	Fanless
Electrical Characteristics	
Frequency	50Hz/60Hz
AC voltage	100-127VAC / 200- 240VAC
Current	0.2A/0.2A
Maximum power rating	7.9W
Idle power	2.3W
PoE power	-
Power Supply	Internal Power Supply
Safety	<ul style="list-style-type: none"> <li>– EN/IEC 60950- 1:2006 + A11:2009 + A1:2010 + A12:2011 + A2:2013</li> <li>– EN/IEC 62368-1, 2nd. &amp; 3rd. Ed.</li> <li>– UL 62368-1, 3rd. Ed.</li> <li>– CAN/CSA C22.2 No. 62368-1, 3rd. Ed.</li> </ul>

### Technical Specifications

	<ul style="list-style-type: none"> <li>– EN/IEC 60825- 1:2018</li> </ul>
Emissions	<ul style="list-style-type: none"> <li>– EN 55032:2015/ CISPR 32, Class A</li> <li>– FCC CFR 47 Part 15: 2018, Class A</li> <li>– ICES-003, Class A</li> <li>– VCCI-32, Class A</li> <li>– CNS 13438, Class A</li> <li>– KS C 9832, Class A</li> <li>– AS/NZS CISPR 32, Class A</li> </ul>
Immunity	BS/EN 55035, CISPR 35, KS C 9835
Generic	EN 55035, CISPR 35
EN	EN/IEC 61000-4-2
ESD	EN/IEC 61000-4-3
Radiated	EN/IEC 61000-4-4
EFT/Burst	EN/IEC 61000-4-5
Surge	EN/IEC 61000-4-6
Conducted	EN/IEC 61000-4-8
Power frequency magnetic field	EN/IEC 61000-4-11
Voltage dips and interruptions	EN/IEC 61000-3-2
Harmonics	EN /IEC 61000-3-3
Device Management	Unmanaged
Mounting	
Mounting positions and supported racking	<ul style="list-style-type: none"> <li>– Mounts in an EIA standard 19 in telco rack or equipment cabinet. 2-post rack kit included</li> <li>– Supports table-top mounting</li> <li>– Supports rack-mounting using the brackets provided</li> <li>– Supports wall-mounting with ports facing either up or down using either the base surface mounting holes, or the brackets provided</li> <li>– Supports under-table mounting using the brackets provided</li> <li>– Must be mounted top surface up. To prevent possible impact to long-term reliability, product should not be mounted upside-down</li> </ul>
Transceivers	

### HPE Networking Instant On 1430 16G Class4 PoE 124W Switch (R8R48A)

I/O ports and slots	16 RJ-45 autosensing 10/100/1000 Class 4 PoE ports (IEEE 802.3 Type 10BASE-T, IEEE 802.3u Type 100BASE-TX, IEEE 802.3ab Type 1000BASE-T); Duplex: 10BASE-T/100BASE-TX: half or full; 1000BASE-T: full only
Physical Characteristics	
Dimensions	260(d) x 275(w) x 44(h) mm
Weight	4.60 lb (2.09 kg)
Processor and Memory	128Kb EEPROM; Packet buffer size: 2.0 Mb
Performance	
100 Mb latency	< 2.7 µSec
1000 Mb latency	< 1.80 µSec
Throughput (Mpps)	23.80 Mpps
Capacity	32 Gbps
MAC address table size	8192 entries

### Technical Specifications

Reliability MTBF (years)	126.1
Environment	
Operating temperature	32°F to 104°F (0°C to 40°C)
Operating relative humidity	15% to 95% @ 104°F (40°C) non-condensing
Nonoperating/ storage temperature	-40°F to 158°F (-40°C to 70°C) up to 15000 ft
Nonoperating/ storage relative humidity	15% to 95% @ 149°F (65°C) non-condensing
Altitude	up to 10,000 ft (3 km)
Acoustics	Fanless
Electrical Characteristics	
Frequency	50Hz/60Hz
AC voltage	100-127VAC / 200- 240VAC
Current	1.7A /0.8A
Maximum power rating	147W
Idle power	5W
PoE power	124W Class 4 PoE
Power Supply	Internal Power Supply

Safety	<ul style="list-style-type: none"> <li>– EN/IEC 60950- 1:2006 + A11:2009 + A1:2010 + A12:2011 + A2:2013</li> <li>– EN/IEC 62368-1, 2nd. &amp; 3rd. Ed.</li> <li>– UL 62368-1, 3rd. Ed.</li> <li>– CAN/CSA C22.2 No. 62368-1, 3rd. Ed.</li> <li>– EN/IEC 60825- 1:2018</li> </ul>
Emissions	<ul style="list-style-type: none"> <li>– EN 55032:2015/ CISPR 32, Class A</li> <li>– FCC CFR 47 Part 15: 2018, Class A</li> <li>– ICES-003, Class A</li> <li>– VCCI-32, Class A</li> <li>– CNS 13438, Class A</li> <li>– KS C 9832, Class A</li> <li>– AS/NZS CISPR 32, Class A</li> </ul>
Immunity	BS/EN 55035, CISPR 35, KS C 9835
Generic	EN 55035, CISPR 35
EN	EN/IEC 61000-4-2
ESD	EN/IEC 61000-4-3
Radiated	EN/IEC 61000-4-4
EFT/Burst	EN/IEC 61000-4-5
Surge	EN/IEC 61000-4-6
Conducted	EN/IEC 61000-4-8
Power frequency magnetic field	EN/IEC 61000-4-11
Voltage dips and interruptions	EN/IEC 61000-3-2
Harmonics	EN /IEC 61000-3-3
Device Management	Unmanaged
Mounting	
Mounting positions and supported racking	<ul style="list-style-type: none"> <li>– Mounts in an EIA standard 19 in telco rack or equipment cabinet. 2-post rack kit included</li> <li>– Supports table-top mounting</li> </ul>

### Technical Specifications

	<ul style="list-style-type: none"> <li>– Supports rack-mounting using the brackets provided</li> <li>– Supports wall-mounting with ports facing either up or down using either the base surface mounting holes, or the brackets provided</li> <li>– Supports under-table mounting using the brackets provided</li> <li>– Must be mounted top surface up. To prevent possible impact to long-term reliability, product should not be mounted upside-down</li> </ul>
Transceivers	

### HPE Networking Instant On 1430 24G Switch (R8R49A)

I/O ports and slots	24 RJ-45 autosensing 10/100/1000 ports (IEEE 802.3 Type 10BASE-T, IEEE 802.3u Type 100BASE-TX, IEEE 802.3ab Type 1000BASE-T); Duplex: 10BASE-T/100BASE-TX: half or full; 1000BASE-T: full only
<b>Physical Characteristics</b>	
Dimensions	225(d) x 340(w) x 44(h) mm
Weight	4.20 lb (1.91 kg)
Processor and Memory	128Kb EEPROM; Packet buffer size: 2.0 Mb
<b>Performance</b>	
100 Mb latency	< 2.7 µSec
1000 Mb latency	< 1.80 µSec
Throughput (Mpps)	35.71 Mpps
Capacity	48 Gbps
MAC address table size	8192 entries
Reliability MTBF (years)	199.5
<b>Environment</b>	
Operating temperature	32°F to 104°F (0°C to 40°C)
Operating relative humidity	15% to 95% @ 104°F (40°C) non-condensing
Nonoperating/ storage temperature	-40°F to 158°F (-40°C to 70°C) up to 15000 ft
Nonoperating/ storage relative humidity	15% to 95% @ 149°F (65°C) non-condensing
Altitude	up to 10,000 ft (3 km)
Acoustics	Fanless
<b>Electrical Characteristics</b>	
Frequency	50Hz/60Hz
AC voltage	100-127VAC / 200- 240VAC
Current	0.3A / 0.2A
Maximum power rating	11.7W
Idle power	3.2W
PoE power	-
Power Supply	Internal Power Supply
Safety	<ul style="list-style-type: none"> <li>– EN/IEC 60950- 1:2006 + A11:2009 + A1:2010 + A12:2011 + A2:2013</li> <li>– EN/IEC 62368-1, 2nd. &amp; 3rd. Ed.</li> <li>– UL 62368-1, 3rd. Ed.</li> <li>– CAN/CSA C22.2 No. 62368-1, 3rd. Ed.</li> <li>– EN/IEC 60825- 1:2018</li> </ul>
Emissions	<ul style="list-style-type: none"> <li>– EN 55032:2015/ CISPR 32, Class A</li> <li>– FCC CFR 47 Part 15: 2018, Class A</li> <li>– ICES-003, Class A</li> </ul>

### Technical Specifications

	<ul style="list-style-type: none"> <li>– VCCI-32, Class A</li> <li>– CNS 13438, Class A</li> <li>– KS C 9832, Class A</li> <li>– AS/NZS CISPR 32, Class A</li> </ul>
Immunity	BS/EN 55035, CISPR 35, KS C 9835
Generic	EN 55035, CISPR 35
EN	EN/IEC 61000-4-2
ESD	EN/IEC 61000-4-3
Radiated	EN/IEC 61000-4-4
EFT/Burst	EN/IEC 61000-4-5
Surge	EN/IEC 61000-4-6
Conducted	EN/IEC 61000-4-8
Power frequency magnetic field	EN/IEC 61000-4-11
Voltage dips and interruptions	EN/IEC 61000-3-2
Harmonics	EN /IEC 61000-3-3
Device Management	Unmanaged
<b>Mounting</b>	
Mounting positions and supported racking	<ul style="list-style-type: none"> <li>– Mounts in an EIA standard 19 in telco rack or equipment cabinet. 2-post rack kit included</li> <li>– Supports table-top mounting</li> <li>– Supports rack-mounting using the brackets provided</li> <li>– Supports wall-mounting with ports facing either up or down using either the base surface mounting holes, or the brackets provided</li> <li>– Supports under-table mounting using the brackets provided</li> <li>– Must be mounted top surface up. To prevent possible impact to long-term reliability, product should not be mounted upside-down</li> </ul>
Transceivers	-

### HPE Networking Instant On 1430 26G 2SFP Switch (R8R50A)

I/O ports and slots	26 RJ-45 autosensing 10/100/1000 ports (IEEE 802.3 Type 10BASE-T, IEEE 802.3u Type 100BASE-TX, IEEE 802.3ab Type 1000BASE-T); Duplex: 10BASE-T/100BASE-TX: half or full; 1000BASE-T: full only 2 SFP 1GbE ports
<b>Physical Characteristics</b>	
Dimensions	225(d) x 388(w) x 44(h) mm
Weight	5.00 lb (2.27 kg)
Processor and Memory	32Mb Flash; Packet buffer size: 12.0 Mb
<b>Performance</b>	
100 Mb latency	< 5.21 $\mu$ Sec
1000 Mb latency	> 2.90 $\mu$ Sec
Throughput (Mpps)	41.68 Mpps
Capacity	56 Gbps
MAC address table size	16384 entries
Reliability MTBF (years)	171.9
<b>Environment</b>	
Operating temperature	32°F to 104°F (0°C to 40°C)
Operating relative humidity	15% to 95% @ 104°F (40°C) non-condensing
Nonoperating/ storage temperature	-40°F to 158°F (-40°C to 70°C) up to 15000 ft
Nonoperating/ storage relative humidity	15% to 95% @ 149°F (65°C) non-condensing

### Technical Specifications

Altitude	up to 10,000 ft (3 km)
Acoustics	Fanless
Electrical Characteristics	
Frequency	50Hz/60Hz
AC voltage	100-127VAC / 200- 240VAC
Current	0.4A / 0.3A
Maximum power rating	16.4W
Idle power	8W
PoE power	-
Power Supply	Internal Power Supply
Safety	<ul style="list-style-type: none"> <li>– EN/IEC 60950- 1:2006 + A11:2009 + A1:2010 + A12:2011 + A2:2013</li> <li>– EN/IEC 62368-1, 2nd. &amp; 3rd. Ed.</li> <li>– UL 62368-1, 3rd. Ed.</li> <li>– CAN/CSA C22.2 No. 62368-1, 3rd. Ed.</li> <li>– EN/IEC 60825- 1:2018</li> </ul>
Emissions	<ul style="list-style-type: none"> <li>– EN 55032:2015/ CISPR 32, Class A</li> <li>– FCC CFR 47 Part 15: 2018, Class A</li> <li>– ICES-003, Class A</li> <li>– VCCI-32, Class A</li> <li>– CNS 13438, Class A</li> <li>– KS C 9832, Class A</li> <li>– AS/NZS CISPR 32, Class A</li> </ul>
Immunity	BS/EN 55035, CISPR 35, KS C 9835
Generic	EN 55035, CISPR 35
EN	EN/IEC 61000-4-2
ESD	EN/IEC 61000-4-3
Radiated	EN/IEC 61000-4-4
EFT/Burst	EN/IEC 61000-4-5
Surge	EN/IEC 61000-4-6
Conducted	EN/IEC 61000-4-8
Power frequency magnetic field	EN/IEC 61000-4-11
Voltage dips and interruptions	EN/IEC 61000-3-2
Harmonics	EN /IEC 61000-3-3
Device Management	Unmanaged
Mounting	
Mounting positions and supported racking	<ul style="list-style-type: none"> <li>– Mounts in an EIA standard 19 in telco rack or equipment cabinet. 2-post rack kit included</li> <li>– Supports table-top mounting</li> <li>– Supports rack-mounting using the brackets provided</li> <li>– Supports wall-mounting with ports facing either up or down using either the base surface mounting holes, or the brackets provided</li> <li>– Supports under-table mounting using the brackets provided</li> <li>– Must be mounted top surface up. To prevent possible impact to long-term reliability, product should not be mounted upside-down</li> </ul>

### Technical Specifications

#### Transceivers

- HPE Aruba Networking 1G SFP LC LX 10km SMF Transceiver (J4859D)
- HPE Networking Instant On 1G SFP LC SX 500m OM2 MMF Transceiver (R9D16A)

### General Protocols

IEEE 802.3i	10 Mbps Ethernet
IEEE 802.3u	100Base-T Ethernet
IEEE 802.3z	1000 Mbps Ethernet
IEEE 802.3ab	1000Base-T
IEEE 802.3af	PoE1 (PoE models only)
IEEE 802.3at	PoE1 (PoE models only)
IEEE 802.3x	Flow Control
IEEE 802.3az	Energy Efficient Ethernet
RFC 2474	QoS diffserv (DSCP) mapping

### Summary of Changes

Date	Version History	Action	Description of Change
27-Feb-2026	<a href="#">Version 11</a>	Changed	Rebranding applied to QuickSpecs
02-Dec-2024	<a href="#">Version 10</a>	Changed	Overview sections was updated.
06-Aug-2024	<a href="#">Version 9</a>	Changed	Configuration Information section was updated.
03-Jun-2024	<a href="#">Version 8</a>	Changed	Configuration Information section was updated.
01-Apr-2024	<a href="#">Version 7</a>	Changed	Configuration Information section was updated.
04-Dec-2023	<a href="#">Version 6</a>	Changed	Series name was updated.
20-Mar-2023	<a href="#">Version 5</a>	Changed	Configuration Information section was updated.
12-Dec-2022	<a href="#">Version 4</a>	Changed	Configuration Information section was updated.
07-Nov-2022	<a href="#">Version 3</a>	Changed	Technical Specifications section was updated.
13-Sep-2022	<a href="#">Version 2</a>	Changed	Configuration Information section was updated.
01-Aug-2022	<a href="#">Version 1</a>	New	New QuickSpecs

Copyright

### Shape the Future of QuickSpecs - Your Input Matters

#### Chat now

© Copyright 2026 Hewlett Packard Enterprise Development LP. The information contained herein is subject to change without notice. The only warranties for Hewlett Packard Enterprise products and services are set forth in the express warranty statements accompanying such products and services. Nothing herein should be construed as constituting an additional warranty. Hewlett Packard Enterprise shall not be liable for technical or editorial errors or omissions contained herein.

To learn more, visit: <http://www.hpe.com/networking>

a50004290enw - 16894 - Worldwide - V11 - 27-February-2026

HEWLETT PACKARD ENTERPRISE

HPE.com

